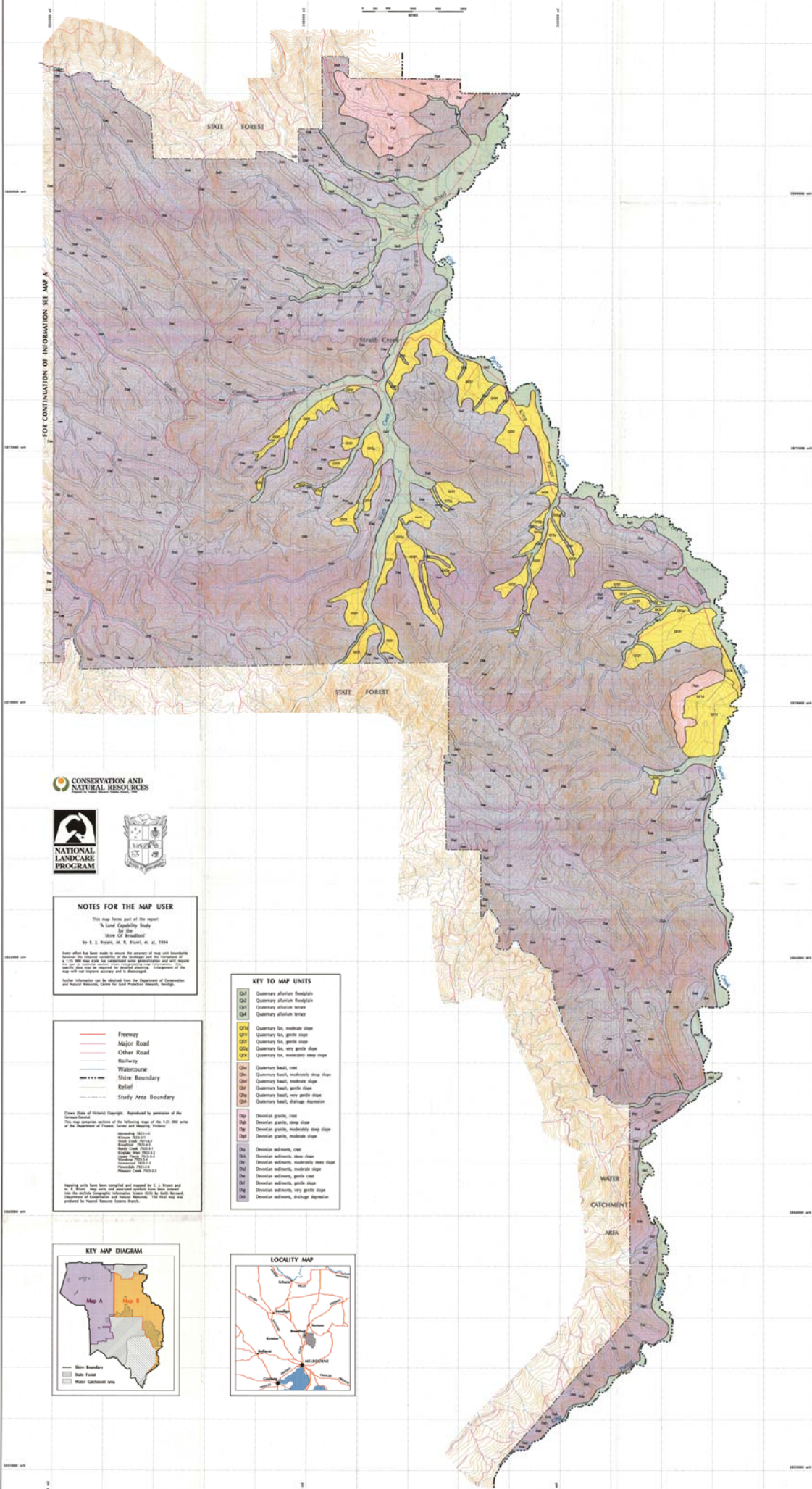


A LAND CAPABILITY STUDY for the SHIRE of BROADFORD

Map 1b: Map Units

This map provides the basis for land capability assessment. A Map Unit is an area of land that is identified by the geology of the parent material, slope and soil type, and is distinct from adjacent map units. Within a Map Unit the land use capability and response to management is considered to be uniform.



FOR CONTINUATION OF INFORMATION SEE MAP A



NOTES FOR THE MAP USER

This map forms part of the report:
A Land Capability Study
 for the
Shire of Broadford
 by E. J. Bryant, M. A. Brown, et al., 1984

Every effort has been made to ensure the accuracy of map unit boundaries. However, the user should be aware that the map is based on aerial photography and field observations. It is not intended as a legal document and should not be used for legal purposes without the approval of the Department of Conservation and Natural Resources, Centre for Land Protection Research, Bendigo.

- Freeway
- Major Road
- Other Road
- Railway
- Watercourse
- Shire Boundary
- Relief
- Study Area Boundary

Contour lines of historical origin. Resembled by permission of the Department of Planning, Urban and Regional Services.

Geological Data:
 1:50,000 Scale
 1:250,000 Scale
 1:500,000 Scale
 1:1,000,000 Scale
 1:2,000,000 Scale
 1:5,000,000 Scale
 1:10,000,000 Scale
 1:20,000,000 Scale
 1:50,000,000 Scale
 1:100,000,000 Scale
 1:200,000,000 Scale
 1:500,000,000 Scale
 1:1,000,000,000 Scale

Mapping work has been carried out and mapped by E. J. Bryant and M. A. Brown. Map units and associated boundaries have been prepared by the Department of Conservation and Natural Resources. The map was prepared by Central Research Systems Pty.

KEY TO MAP UNITS

- Qd1 Quaternary alluvium floodplain
- Qd2 Quaternary alluvium floodplain
- Qd3 Quaternary alluvium terrace
- Qd4 Quaternary alluvium terrace
- Qd5 Quaternary alluvium terrace
- Qd6 Quaternary alluvium terrace
- Qd7 Quaternary alluvium terrace
- Qd8 Quaternary alluvium terrace
- Qd9 Quaternary alluvium terrace
- Qd10 Quaternary alluvium terrace
- Qd11 Quaternary alluvium terrace
- Qd12 Quaternary alluvium terrace
- Qd13 Quaternary alluvium terrace
- Qd14 Quaternary alluvium terrace
- Qd15 Quaternary alluvium terrace
- Qd16 Quaternary alluvium terrace
- Qd17 Quaternary alluvium terrace
- Qd18 Quaternary alluvium terrace
- Qd19 Quaternary alluvium terrace
- Qd20 Quaternary alluvium terrace
- Qd21 Quaternary alluvium terrace
- Qd22 Quaternary alluvium terrace
- Qd23 Quaternary alluvium terrace
- Qd24 Quaternary alluvium terrace
- Qd25 Quaternary alluvium terrace
- Qd26 Quaternary alluvium terrace
- Qd27 Quaternary alluvium terrace
- Qd28 Quaternary alluvium terrace
- Qd29 Quaternary alluvium terrace
- Qd30 Quaternary alluvium terrace
- Qd31 Quaternary alluvium terrace
- Qd32 Quaternary alluvium terrace
- Qd33 Quaternary alluvium terrace
- Qd34 Quaternary alluvium terrace
- Qd35 Quaternary alluvium terrace
- Qd36 Quaternary alluvium terrace
- Qd37 Quaternary alluvium terrace
- Qd38 Quaternary alluvium terrace
- Qd39 Quaternary alluvium terrace
- Qd40 Quaternary alluvium terrace
- Qd41 Quaternary alluvium terrace
- Qd42 Quaternary alluvium terrace
- Qd43 Quaternary alluvium terrace
- Qd44 Quaternary alluvium terrace
- Qd45 Quaternary alluvium terrace
- Qd46 Quaternary alluvium terrace
- Qd47 Quaternary alluvium terrace
- Qd48 Quaternary alluvium terrace
- Qd49 Quaternary alluvium terrace
- Qd50 Quaternary alluvium terrace
- Qd51 Quaternary alluvium terrace
- Qd52 Quaternary alluvium terrace
- Qd53 Quaternary alluvium terrace
- Qd54 Quaternary alluvium terrace
- Qd55 Quaternary alluvium terrace
- Qd56 Quaternary alluvium terrace
- Qd57 Quaternary alluvium terrace
- Qd58 Quaternary alluvium terrace
- Qd59 Quaternary alluvium terrace
- Qd60 Quaternary alluvium terrace
- Qd61 Quaternary alluvium terrace
- Qd62 Quaternary alluvium terrace
- Qd63 Quaternary alluvium terrace
- Qd64 Quaternary alluvium terrace
- Qd65 Quaternary alluvium terrace
- Qd66 Quaternary alluvium terrace
- Qd67 Quaternary alluvium terrace
- Qd68 Quaternary alluvium terrace
- Qd69 Quaternary alluvium terrace
- Qd70 Quaternary alluvium terrace
- Qd71 Quaternary alluvium terrace
- Qd72 Quaternary alluvium terrace
- Qd73 Quaternary alluvium terrace
- Qd74 Quaternary alluvium terrace
- Qd75 Quaternary alluvium terrace
- Qd76 Quaternary alluvium terrace
- Qd77 Quaternary alluvium terrace
- Qd78 Quaternary alluvium terrace
- Qd79 Quaternary alluvium terrace
- Qd80 Quaternary alluvium terrace
- Qd81 Quaternary alluvium terrace
- Qd82 Quaternary alluvium terrace
- Qd83 Quaternary alluvium terrace
- Qd84 Quaternary alluvium terrace
- Qd85 Quaternary alluvium terrace
- Qd86 Quaternary alluvium terrace
- Qd87 Quaternary alluvium terrace
- Qd88 Quaternary alluvium terrace
- Qd89 Quaternary alluvium terrace
- Qd90 Quaternary alluvium terrace
- Qd91 Quaternary alluvium terrace
- Qd92 Quaternary alluvium terrace
- Qd93 Quaternary alluvium terrace
- Qd94 Quaternary alluvium terrace
- Qd95 Quaternary alluvium terrace
- Qd96 Quaternary alluvium terrace
- Qd97 Quaternary alluvium terrace
- Qd98 Quaternary alluvium terrace
- Qd99 Quaternary alluvium terrace
- Qd100 Quaternary alluvium terrace

